

PRECAUTIONS:



Warning: When cut with certain equipment, this product can expose you to chemicals including crystalline silica (airborn particles of respirable size), which is known to the state of California to cause cancer. For more information, go to www.p65warnings.ca.gov.

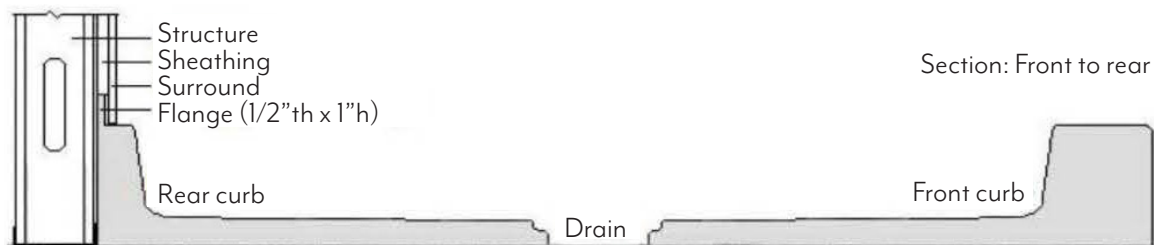
- Breathing PPE is required. Use wet saws when possible. Respirators are required for cutting.
- Cut outdoors if possible or in a well-ventilated area.
- The shower pan or bathtub base should be installed first.
- Ensure blocking is installed for future installation of accessories or grab bars.
- Install wall substrate (Greenboard) no closer than 1/4" above the pan flanges (or directly to the pan if required by local fire code).
- The Greenboard should extend beyond the shower pan/tile base flanges at least 1/16".
- Ensure Greenboard is as flat and free of any protruding screws. Coordinate with drywall or contractor to ensure a flat substrate. Uneven or non-square walls will result in poor installation.

STANDARD INSTALLATION:

- The shower panel pieces are shipped slightly oversize to be trimmed to fit field conditions.
- Shower panels are designed to install directly on the drywall (most codes require this to be moisture-resistant drywall). If installing on existing tile, please contact your Mshower project manager or Certified Installer for specific instructions.
- To guide trimming, establish a control line scribed on the Moisture Resistant Substrate/Greenboard where the panels will be installed, including the sides and tops.
- For panel systems that extend to the ceiling, take measurements from the shower pan shoulder (in front of the flanges) to the ceiling. The ceiling is the control line.
- For panel systems not extending to the ceiling, scribe a level control line (less than the total height of the provided panels) to guide trimming.

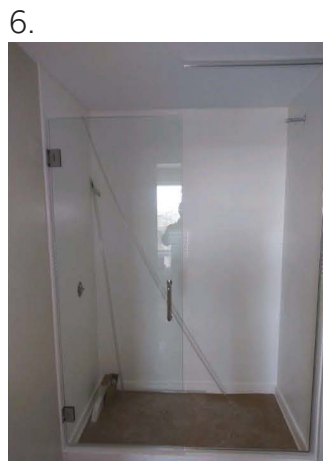
STANDARD INSTALLATION (CONT.):

- Only trim the inside edges or the bottom edges of the panels. The outer sides and top sides are factory-finished edges.
- Installation of tile or horizontal patterned panels should be aligned at the finished edge along the top control line. Any trimming at the bottom should be based on prior alignment of the tile pattern.
- Clean the panels with acetone and allow them to dry before applying adhesives.
- Install the back panel first. Then trim the side panels based on the distance from the back panel to the vertical control lines on the outside of the shower.
- Whenever possible, dry fit panels before using adhesive to ensure correct fit and alignment.
- 100% silicone or construction adhesive can be used to adhere the panels to the wall. Apply adhesive in evenly placed circles on the Greenboard. For full-size back panels, approximately one tube of silicone is required. Side panels require 1/2 tube. A triple amount of construction is required.
- For silicone adhesive, we recommend 1/2 pull of caulk gun per square foot.
- Marble/Granite construction adhesive may be used. Recommend one pull of caulk gun per square foot.
- Panels should be braced for approximately 24 hours to allow for complete drying and setting.
- Inside corners should be caulked with color-matched 100% silicone. We recommend mold-resistant, such as GE Silicone II. Panel-to-wall edges are caulked with paintable latex caulk.
- Trim sticks are installed last, if needed, to conceal the panel edges and typically extend to the floor to the high point of the panels.



INSTALLATION PICTURES:

1. Pan installed after framing, before Greenboard/Drywall.
2. Typical condition before hanging shower panels.
3. Installation of the back panel. Typically, the back panel is installed in each available room first. The panels are individually templated per room. Do not assume all rooms will be the same dimensions or square.
4. Template the sides and install them. One method is to brace the side panels with sticks to help the adhesive to cure. In more humid climates, this could take longer, so they will leave the sticks there for the appropriate time. Note the plumbing cutouts are made prior to installation.
5. Once the adhesive cures, remove the sticks and begin silconing the joints. The picture below shows the shower surround sans sticks and prior to caulking. Gaps should be less than ~1/4" prior to silicone sealing. Note this installation is not to the ceiling – check brand/job standards for tight-to-ceiling requirements.
6. The finished product with accessories and shower door installed.





SHOWER SURROUND INSTALLATION INSTRUCTIONS

REPAIRING MAJOR DAMAGE:

- Chips and damage through the gel coat or deep into the solid surface can be repaired using the provided gel coat or acrylic repair kit. The repair liquid included in your repair kit is color matched to the order. Due to container shipping regulations, the gel coat catalyst is not included in the repair kit. Obtain a small amount of BONDO liquid hardener made by 3M from a local chemical supply company, automotive supply shop, or paint shop.
- Clean the damaged area thoroughly before starting the repair.
- Repair Instructions:
 1. In a small cup, mix ½ Fl Oz of gel coat with eight drops of BONDO hardener. For an extra fast setting, use 12 drops of hardener. Additional hardener will cause color damage. For larger repairs, mix catalyst to gel coat at a rate of 1.5%-2%. Adding more than 3% will result in color damage.
 2. Mix thoroughly with a small mixing rod for 2 minutes.
 3. Using a hobby brush, apply the mixture to the damaged area just above the surface of the surrounding gel coat.
 4. Allow drying for at least 1 hour.
 5. Sand to level using 240 grit sandpaper, and polish using progressively finer sandpaper up to 600 grit for matte finishes and 2000 grit for glossy finishes.

SHOWER PAN PLACEMENT:

- A licensed plumber is usually required by code to install the shower pans.
- Shower pans are typically placed directly between the framing (depending on local fire codes, gypsum wallboard may or may not extend to the floor).
- Shower pans are typically placed directly on the subfloor (depending on local fire codes, gypcrete may be required below the shower pan).
- The shower pan placement should coordinate with the plumbing location and the framing.

