



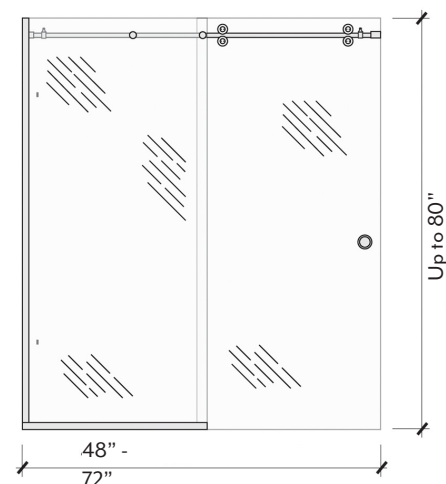
SKYLINE SERIES 4" ROLLER CHANNEL SHOWER DOOR

UNIT FEATURES:

- 1 Stationary Panel, 1 Sliding Panel
- 3/8" Clear Glass
- 3/4" Bar
- 4 Large, Smooth Rollers
- U-channel on Fixed Panel
- 2-1/4" Recessed Pull for easy opening/closing
- Doors overlap between 1" - 3"

SPECIFICATIONS:

Our tub and shower enclosures are fabricated with extruded 6000 series billet.



CODE COMPLIANCE:

- ANSI Z.97.1 (Tempered Glass)
- CPSC 16CFR1201 || (Glazing Materials)
- ASTM C1048-85 (Anodized Finishes)
- USFS DD-G-1403B (Tempered Glass)
- SGCC Certified

FINISHES AVAILABLE:

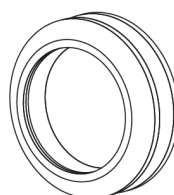
- Chrome (CH)
- Brushed Nickel (NI)
- Roman Bronze (RB)
- Matte Black (MB)

GLASS PATTERNS AVAILABLE:

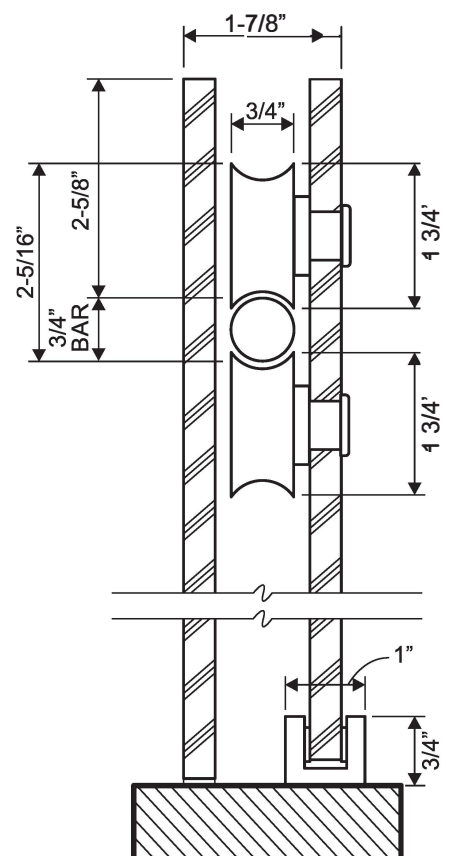
- 3/8" Clear Standard
- Compatible with C.10 Protective Glass Coating
- Additional Patterns Available

HANDLE:

- Recessed finger pull standard
- Additional handle options available



2-1/4" RECESSED FINGER PULL



O: (706) 350-4300 | F: (706) 350-4305
WWW.MGROUPOCORP.COM

